

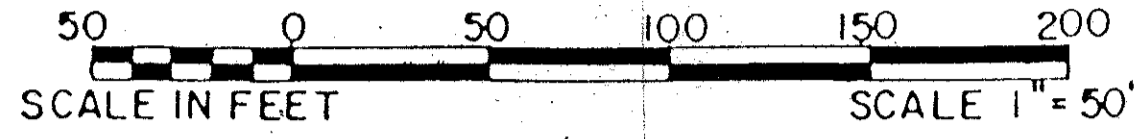
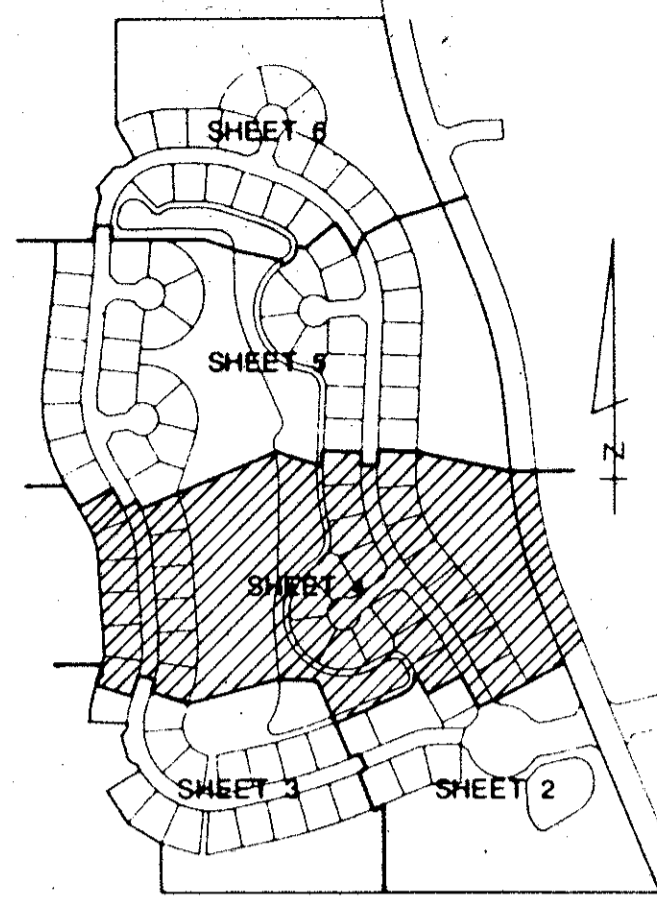
LAKEFIELD OF THE LANDINGS AT WELLINGTON P.U.D. - PLAT 3A

IN PART OF SECTION 7, TOWNSHIP 44 SOUTH, RANGE 41 EAST
 PALM BEACH COUNTY, FLORIDA
 IN SIX SHEETS SHEET NO. 4

GEE & JENSON
 ENGINEERS - ARCHITECTS - PLANNERS, INC.
 WEST PALM BEACH, FLORIDA
 AUGUST 1988

0269-006

35



STATE OF FLORIDA
 COUNTY OF PALM BEACH
 This plat was filed for
 record at _____ M. this _____ day
 of _____ 1988, and duly
 recorded in Plat book No. _____
 on Pages _____ thru _____.

JOHN B. DUNKLE
 Clerk Circuit Court

By: _____ D.C.

